



    TheOfficialSMDC www.smdc.com

HLURB TLS No. ENCRFO-16-01-004

Roxas Blvd., Brgy. San Rafael, Pasay City

Completion Date: 1st Quarter 2020

Owner/Developer: SM Development Corporation

The background of the right side of the image features several horizontal, wavy lines in a gold color, creating a sense of movement and depth.

COAST

RESIDENCES

ROXAS BLVD., PASAY CITY

COAST
R E S I D E N C E S
ROXAS BLVD., PASAY CITY

LIFE IN PANORAMIC PERSPECTIVE

New views await you at Coast Residences, the newest SMDC Premier Development. Situated in Roxas Boulevard, Coast Residences gives grand views of the Manila Bay Sunset and the Metro Manila Cityscape. With a stunning exterior design and interiors inspired by Bali's top hotels, Coast Residences gives a new view on premier condo living



Building Facade
Artist's Perspective



- Manila Yacht Club (1.05km)
- Manila Zoo and Botanical Garden (1.21km)
- Baywalk Sunset Market (1.26km)
- Manila Ocean Park (3.31 km)
- Luneta (3.67 km)
- Intramuros (4.63km)



- Star City (399 m)
- Cultural Center of the Philippines (837m)
- SM Mall of Asia Arena (2.27 km)
- City of Dreams (2.58 km)
- Solaire Resort and Casino (2.58 km)
- Resorts World (2.58 km)



- Museo Pambata (3.05km)
- National Museum (3.73km)
- San Agustin Museum (4.13 km)



- World Trade Center Bazaar (450 km)
- Mall of Asia (2.27 km)



- MOA Terminal (2.27 km)



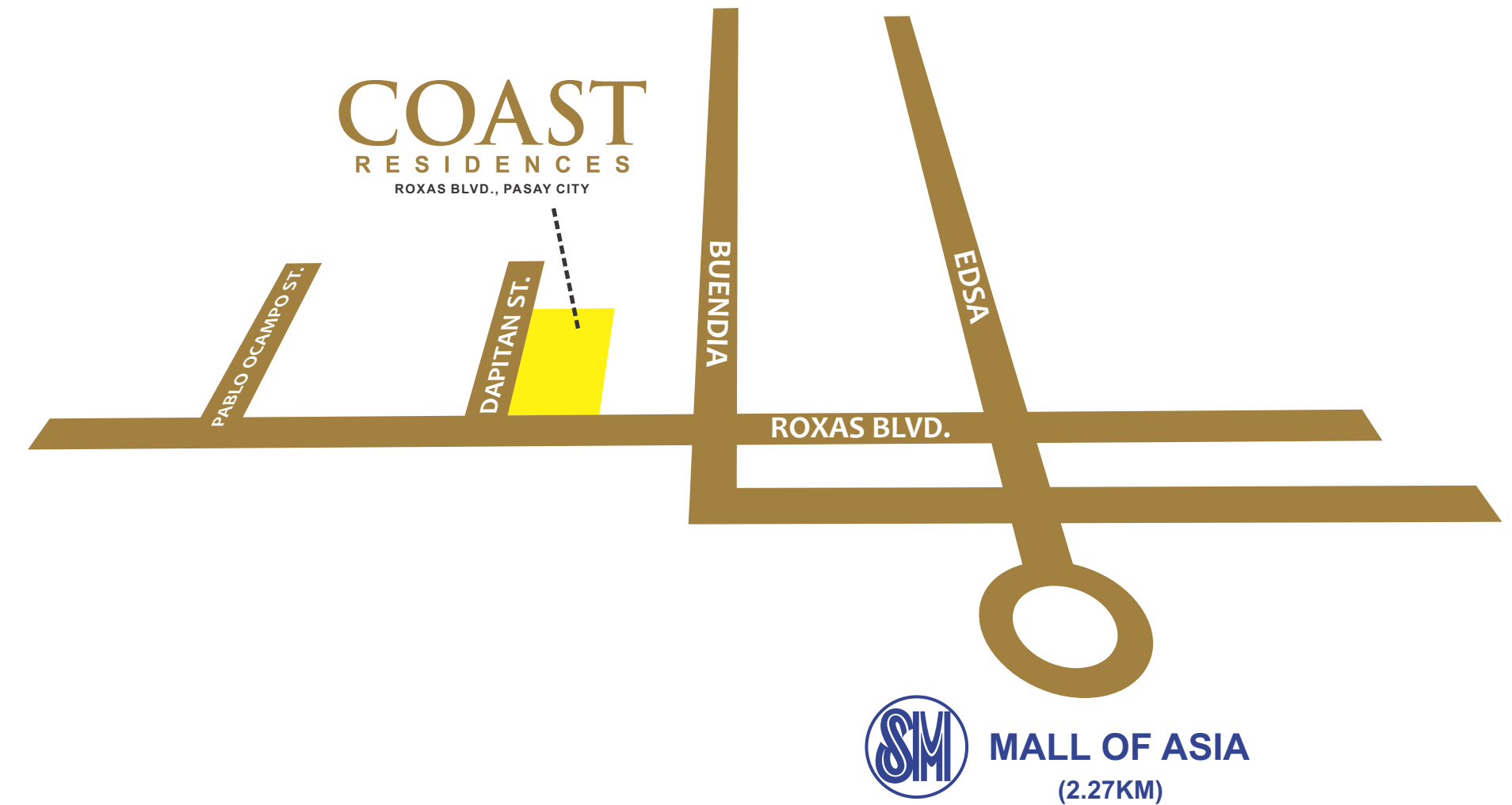
- Ninoy Aquino International Airport (4.00 km)



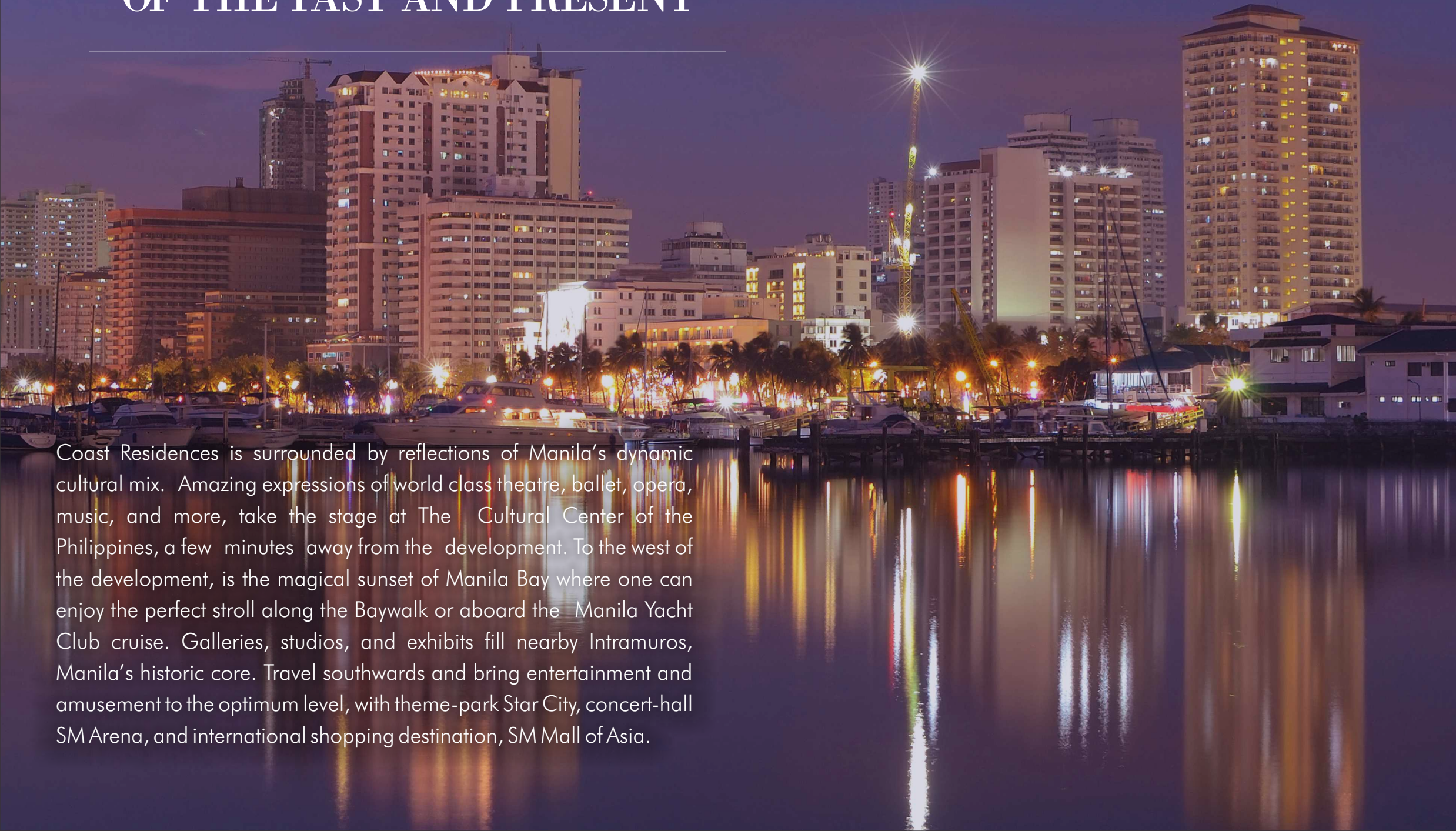
- Harbour Square (744.64 m)
- Aristocrat (1.67 km)
- Robinsons Ermita (2.47 km)
- SMX Convention Center Bazaars (2.58 km)



- Manila Hospital (1.12 km)



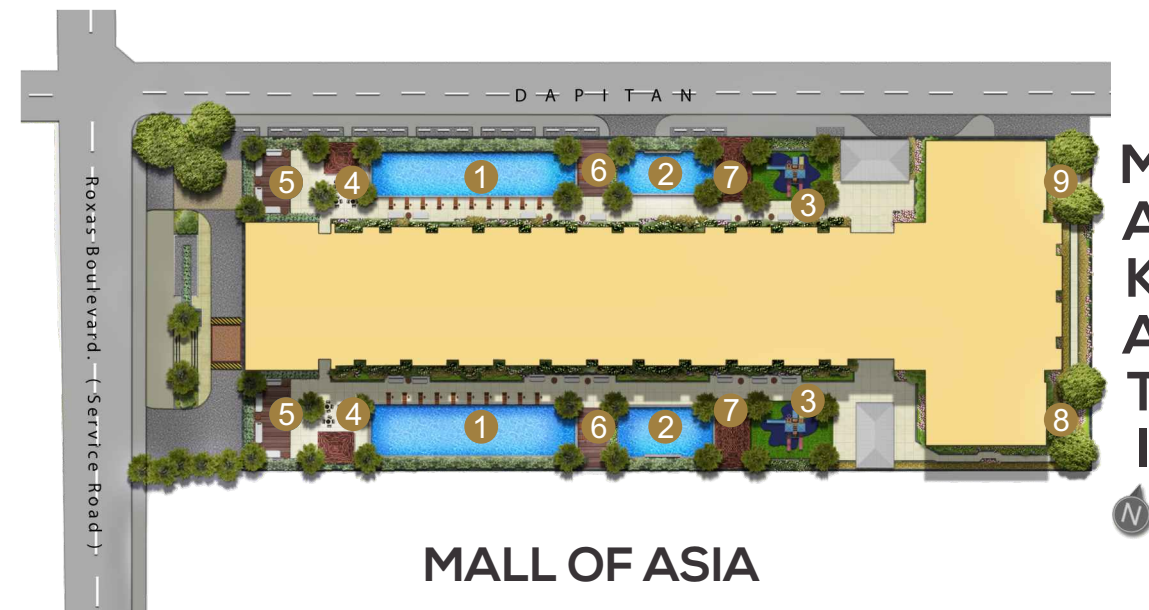
A LOCATION WITH RICH VIEWS OF THE PAST AND PRESENT



Coast Residences is surrounded by reflections of Manila's dynamic cultural mix. Amazing expressions of world class theatre, ballet, opera, music, and more, take the stage at The Cultural Center of the Philippines, a few minutes away from the development. To the west of the development, is the magical sunset of Manila Bay where one can enjoy the perfect stroll along the Baywalk or aboard the Manila Yacht Club cruise. Galleries, studios, and exhibits fill nearby Intramuros, Manila's historic core. Travel southwards and bring entertainment and amusement to the optimum level, with theme-park Star City, concert-hall SM Arena, and international shopping destination, SM Mall of Asia.



YACHT CLUB



MALL OF ASIA



- 1 Adult Pool
- 2 Kiddie Pool
- 3 Children's Playground
- 4 Cabana
- 5 View Lounge
- 6 Seating Areas
- 7 Gazebo
- 8 Jogging Paths
- 9 Meditation Garden

HOTEL-INSPIRED OPULENCE

The opulent lobby, with its granite porcelain floors, ambient-mood lighting, inspired design details, and friendly front desk service redefines luxury living while providing a warm welcome to residents and guests.



Grand Lobby
Artist's Perspective

AN INVITING RETREAT WITH A REMARKABLE BACKDROP

Each space in Coast Residences hosts a harmony of inspiring sights and indescribable refinement that provides both a sophisticated atmosphere and a relaxing environment.



Penthouse Lounge
Artist's Perspective

AS FAR AS THE EYE CAN SEE

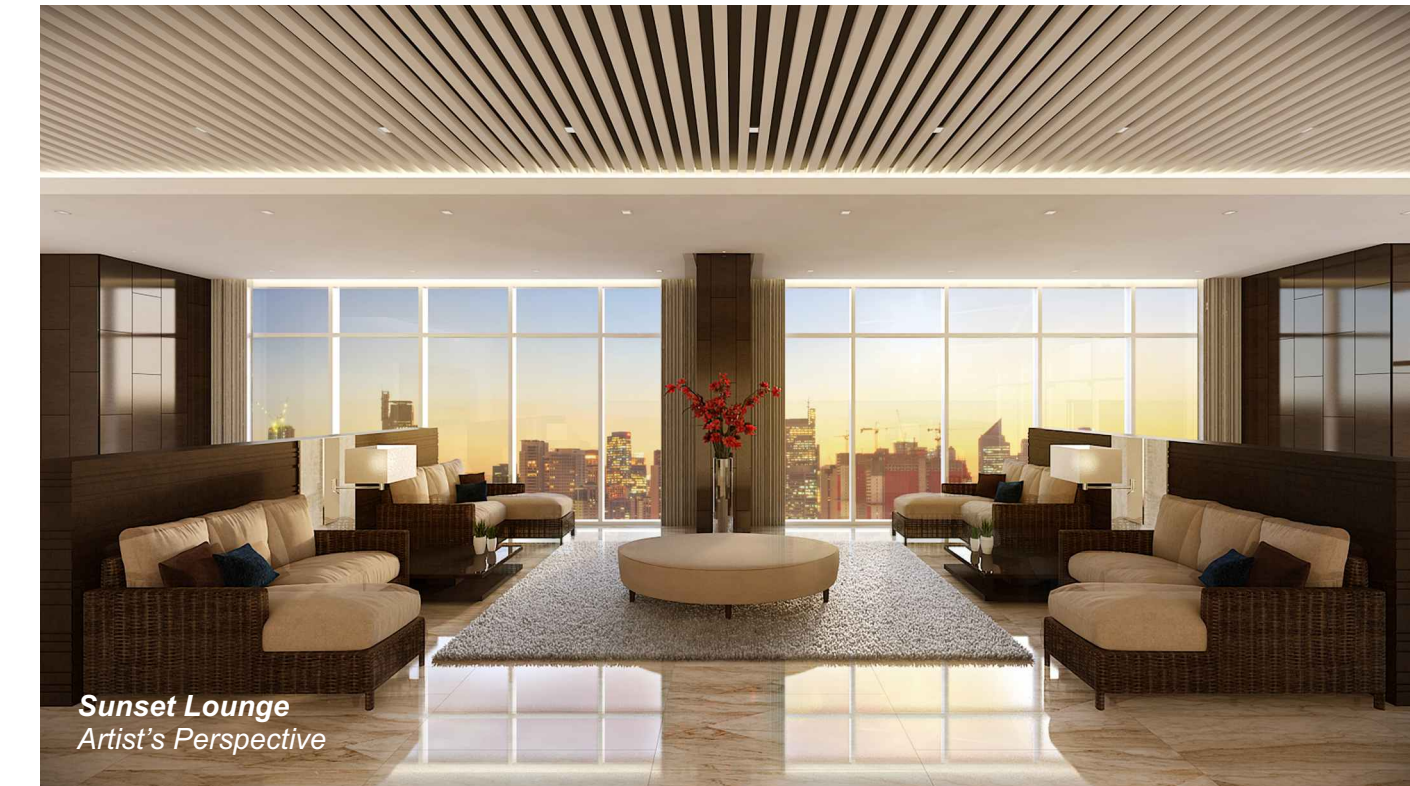
Designed to capture your eyes with its seagull-inspired façade design, Coast Residences soars 41 storeys high.

The angles of its wings serve as the balcony of units, where one can enjoy endless views, enhanced by harbor lights and dazzling city sights.





Game Room
Artist's Perspective



Sunset Lounge
Artist's Perspective

BREATHTAKING SIGHTS

An exclusive Sunset Lounge with a Game Room for residents are designed with floor-to-ceiling windows allowing natural light to fill the spaces and affording one panoramic views of Makati's dazzling city sights and Mall of Asia's splendid fireworks display.



THE STUNNING POOL AND VIEW DECK

Coast Residences embraces the full beauty of its waterfront location with a breathtaking pool and view deck facing Manila Bay, for truly distinct leisurely moments everyday.

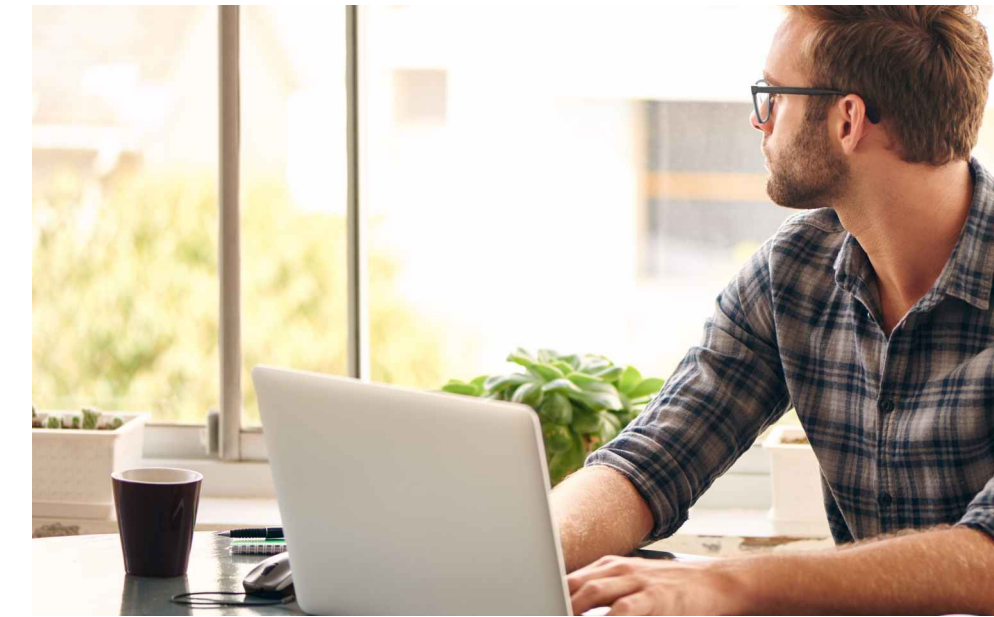


REFINED SPACES WITH INSPIRING SIGHTS

Generously appointed spaces with captivating views, perfectly reflecting your own personal flair. Choose from Studio, 1 Bedroom, 2 Bedroom, and Family Suites units. Coast Residences' Family Suites come with flexi areas convertible to a home office for your start-up business, a nursery room for your first born child or an entertainment room for the entire family. Family Suites units can also be combined to ensure there is room for your growing family.



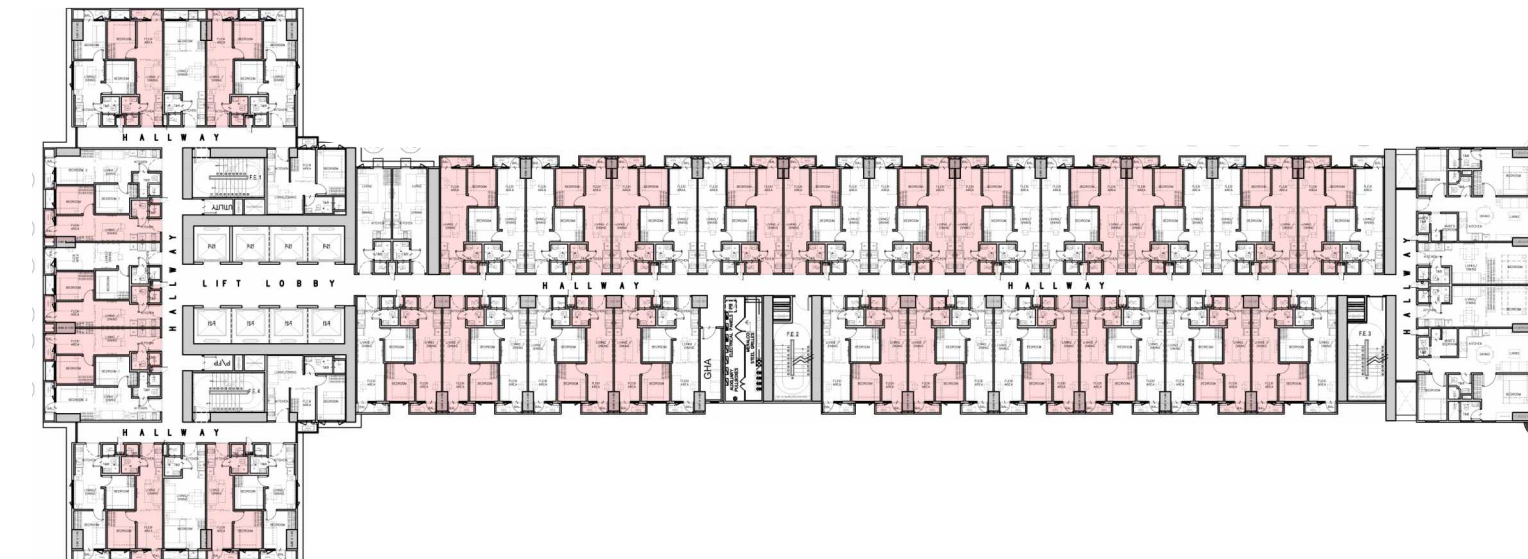
Model Unit
Artist's Perspective



FAMILY SUITE A WITH BALCONY FACING MAKATI

Enjoy an unbeatable setting with the dazzling city sights of the Makati city skyline right from your balcony. This unit has a flexi area that may be converted to an office or workshop space so you can run the family business or work from home.

KEY PLAN



±26.12 to ±30.98 sqm



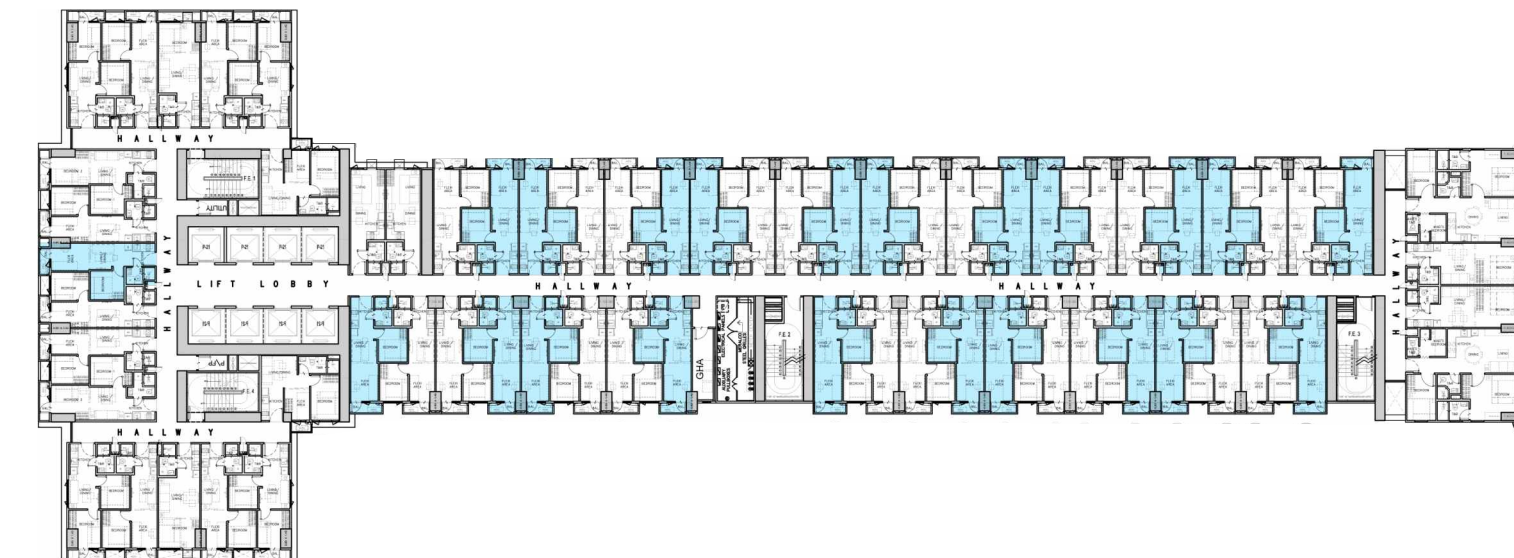
Model Unit
Artist's Perspective



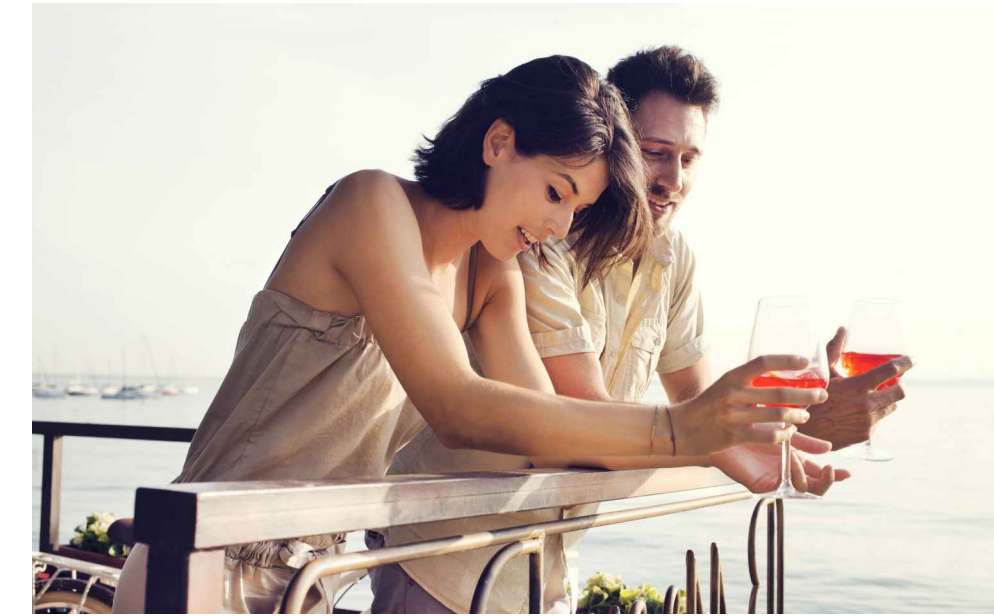
FAMILY SUITE B WITH BALCONY FACING AMENITY & CCP

The comfort of your home combined with Coast Residences' pool waters and skyline views provide a revitalizing atmosphere. Convert your flexi area to an interactive play room where you can bond with the kids after an afternoon weekend swim.

KEY PLAN



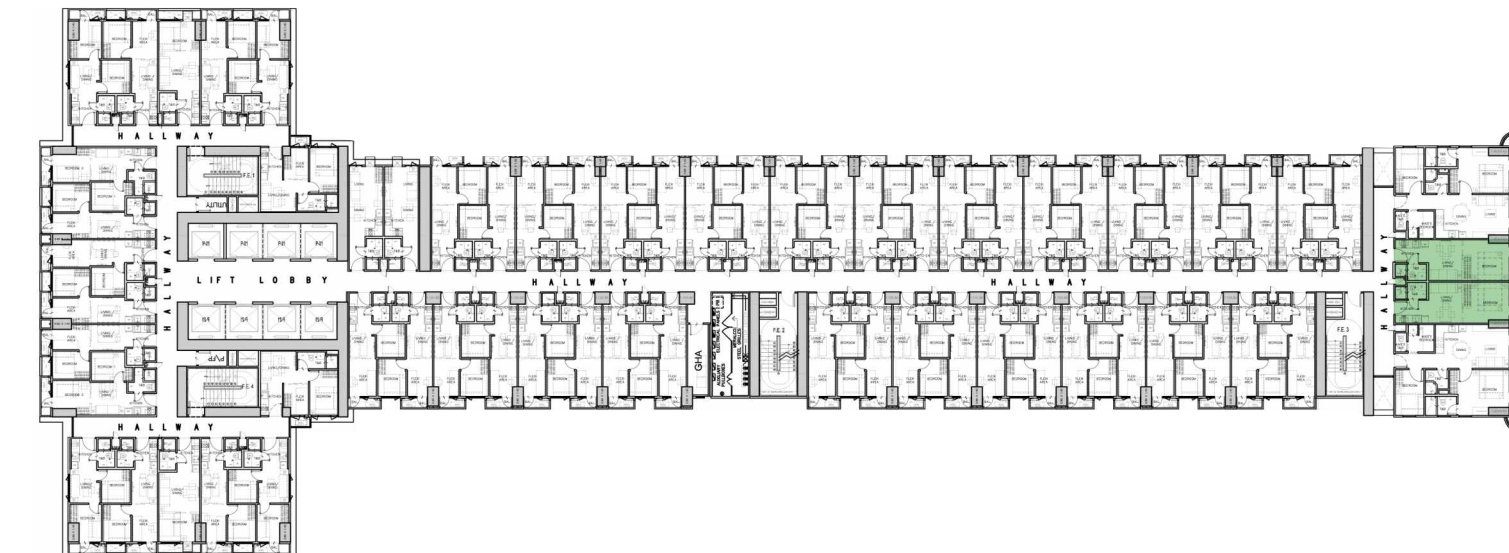
± 26.00 sqm



1 BEDROOM WITH BALCONY FACING MANILA BAY

From your bedroom balcony, enjoy Manila Bay's claim to fame: breathtaking views of the sunset and beyond. Perfect for a relaxed stay-at-home evening after a busy week at work.

KEY PLAN



±26.55 to ±30.91 sqm



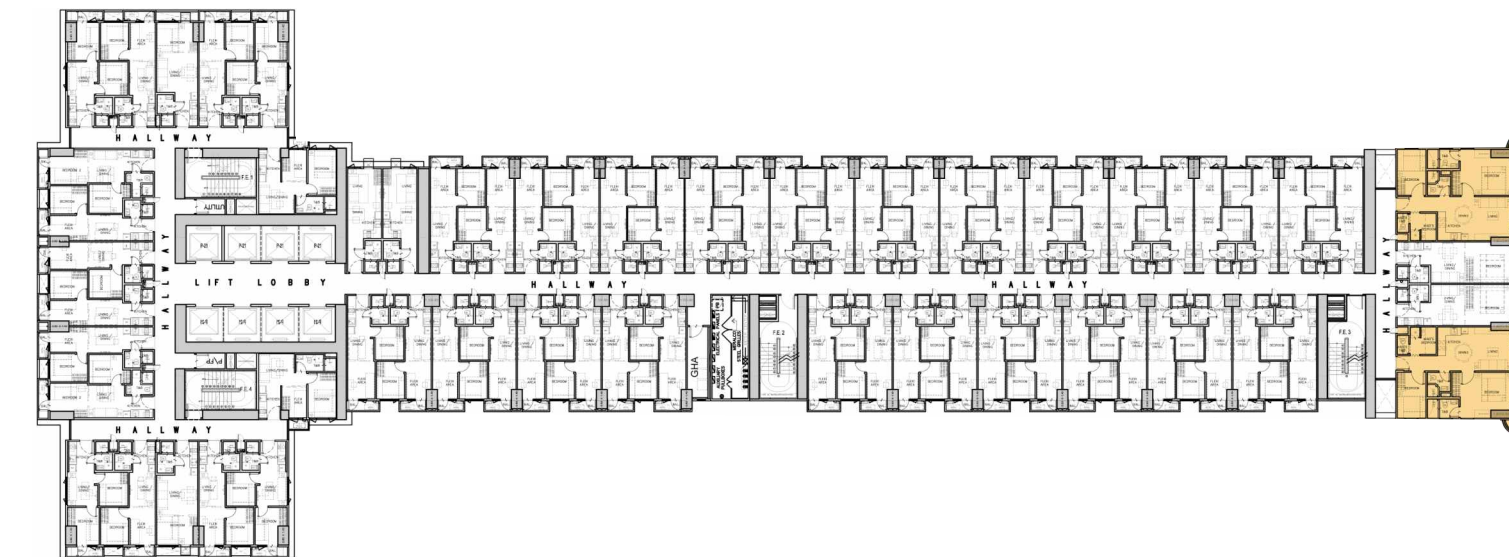
Model Unit
Artist's Perspective



2 BEDROOM END UNIT (PENTHOUSE) FACING MANILA BAY

High above the buzzing city, the lower and upper penthouse units are situated on the 40th and 41st floors of the development to offer romantic views of the city's iconic Manila bay and Yacht Club. Stay-at-home weekends become more special as you indulge in magical sunsets with your loved ones.

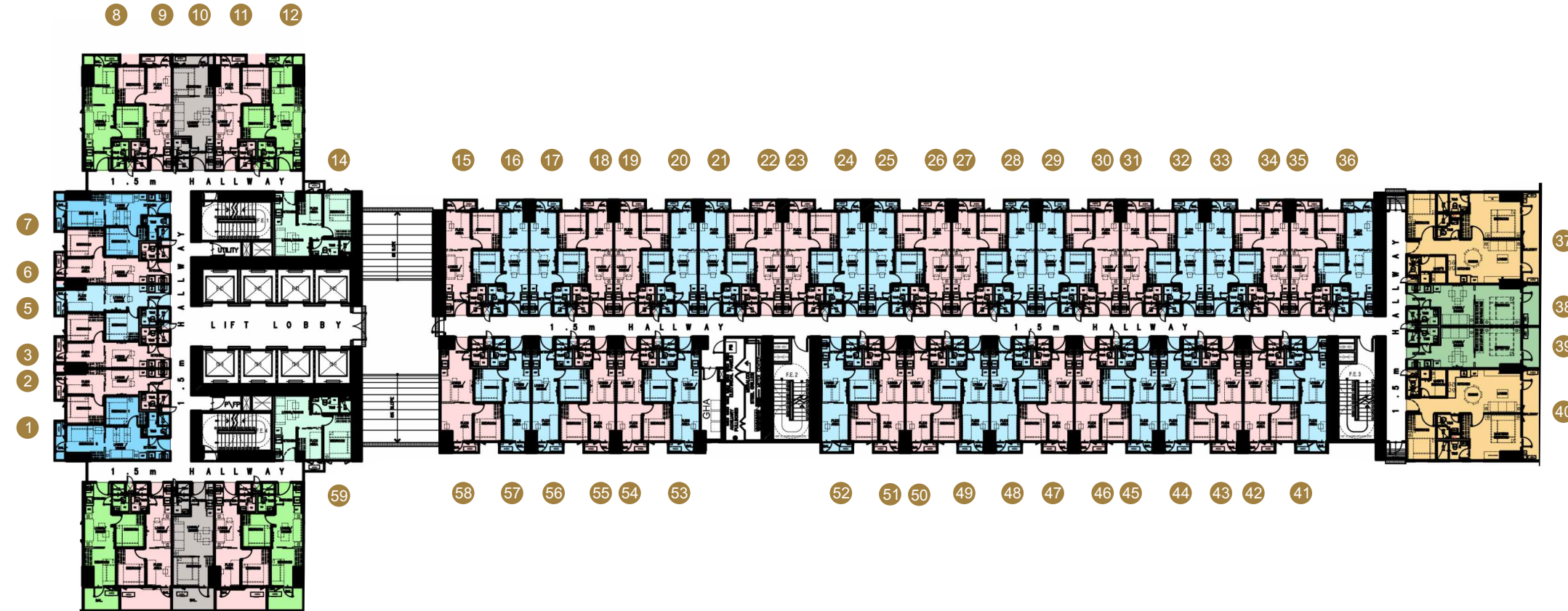
KEY PLAN



±66.96 to ±68.55 sqm

TYPICAL BUILDING FLOOR LAYOUT

7th Floor

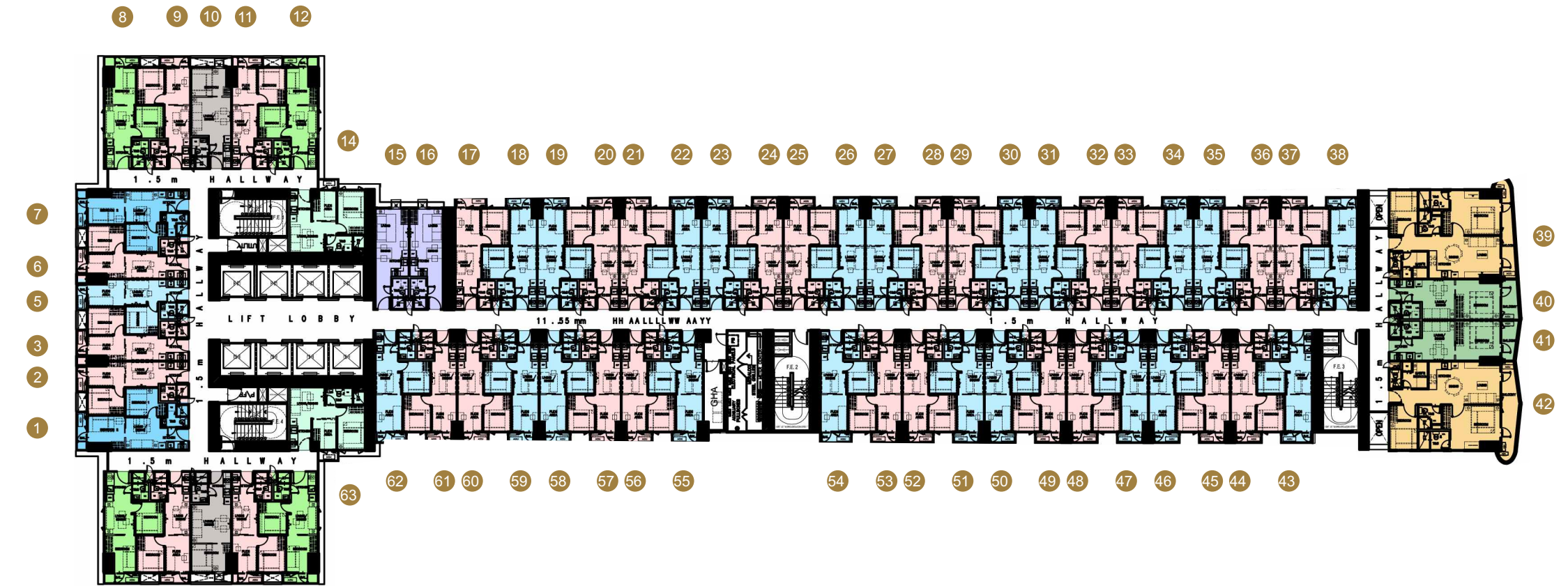


LEGEND:

- | | |
|--|--|
| 1. FAMILY SUITE A WITH BALCONY | 6. 1-BEDROOM UNIT WITH DEN |
| 2. FAMILY SUITE B WITH BALCONY | 7. 2-BEDROOM END UNIT WITH BALCONY |
| 3. 2-BEDROOM FAMILY SUITE B WITH BALCONY | 8. 1-BEDROOM UNIT WITH BALCONY |
| 4. 1-BEDROOM UNIT WITH BALCONY | |
| 5. 2-BEDROOM FAMILY SUITE B WITH BALCONY | |

TYPICAL BUILDING FLOOR LAYOUT

8th, 11th, 15th, 18th, 21st, 24th, 27th, 30th, 33rd and 36th

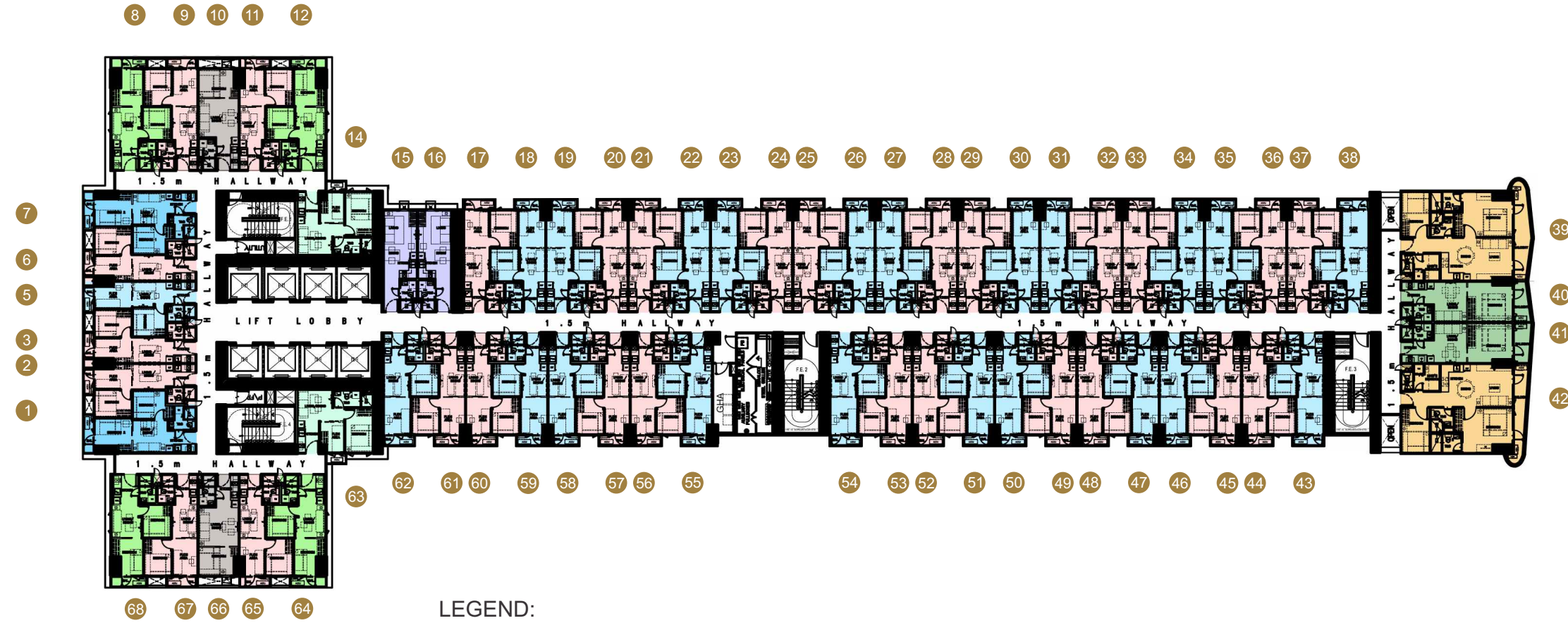


LEGEND:

- | | |
|--|--|
| 1. FAMILY SUITE A WITH BALCONY | 6. STUDIO UNIT |
| 2. FAMILY SUITE B WITH BALCONY | 7. 1-BEDROOM UNIT WITH DEN |
| 3. 2-BEDROOM FAMILY SUITE B WITH BALCONY | 8. 2-BEDROOM END UNIT WITH BALCONY |
| 4. 1-BEDROOM UNIT | 8. 1-BEDROOM UNIT WITH BALCONY |
| 5. 2-BEDROOM FAMILY SUITE B WITH BALCONY | |

TYPICAL BUILDING FLOOR LAYOUT

9th, 12th, 16th, 19th, 22nd, 25th, 28th, 31st, 34th and 37th

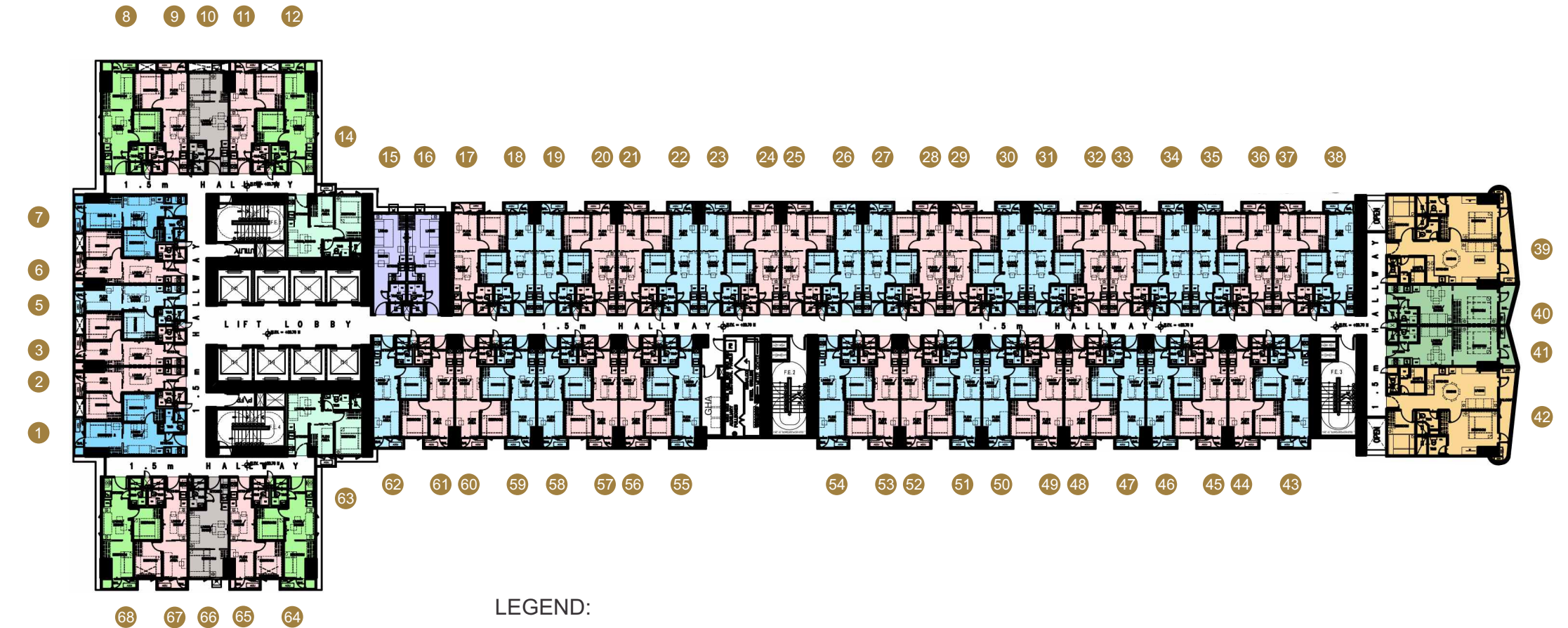


LEGEND:

- | | |
|---|---|
| ■ 1. FAMILY SUITE A WITH BALCONY | ■ 6. STUDIO UNIT |
| ■ 2. FAMILY SUITE B WITH BALCONY | ■ 7. 1-BEDROOM UNIT WITH DEN |
| ■ 3. 2-BEDROOM FAMILY SUITE B WITH BALCONY | ■ 8. 2-BEDROOM END UNIT WITH BALCONY |
| ■ 4. 1-BEDROOM UNIT | ■ 8. 1-BEDROOM UNIT WITH BALCONY |
| ■ 5. 2-BEDROOM FAMILY SUITE B WITH BALCONY | |

TYPICAL BUILDING FLOOR LAYOUT

10th, 14th, 17th, 20th, 23rd, 26th, 29th, 32nd, and 35th

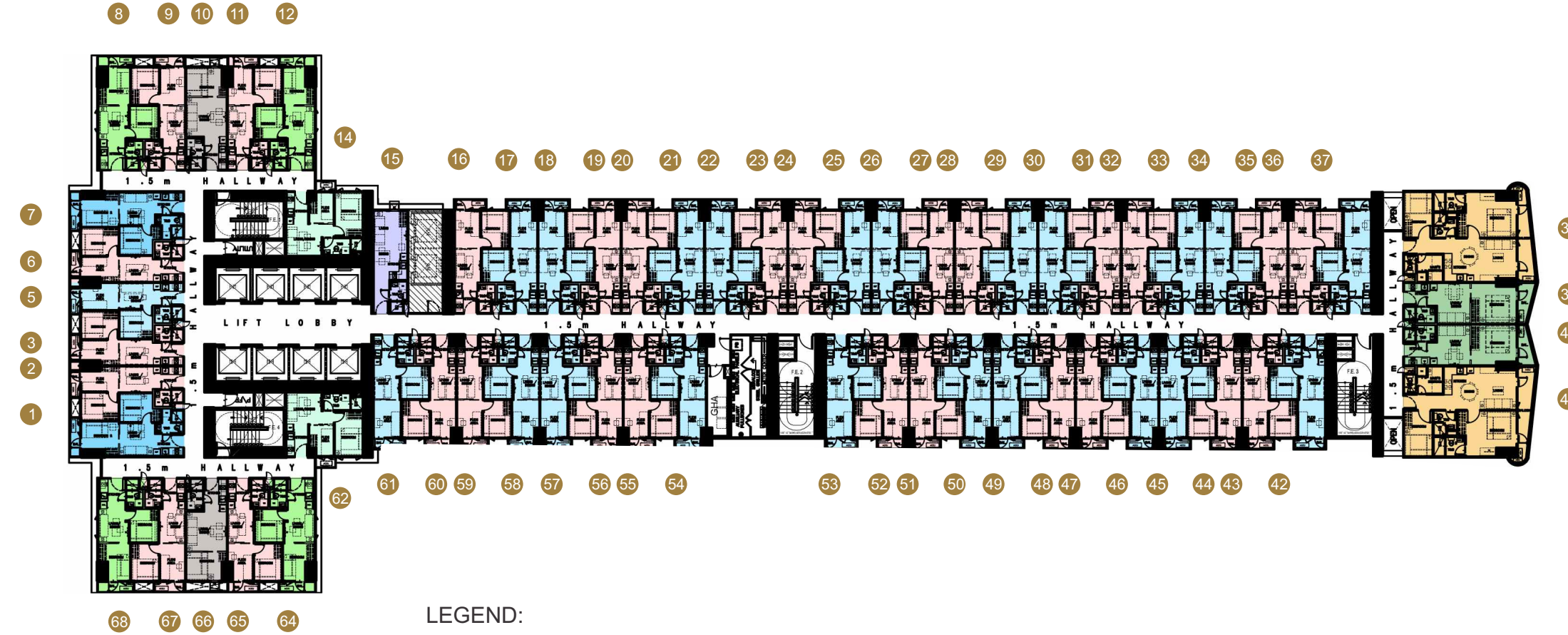


LEGEND:

- | | |
|---|---|
| ■ 1. FAMILY SUITE A WITH BALCONY | ■ 6. STUDIO UNIT |
| ■ 2. FAMILY SUITE B WITH BALCONY | ■ 7. 1-BEDROOM UNIT WITH DEN |
| ■ 3. 2-BEDROOM FAMILY SUITE B WITH BALCONY | ■ 8. 2-BEDROOM END UNIT WITH BALCONY |
| ■ 4. 1-BEDROOM UNIT | ■ 8. 1-BEDROOM UNIT WITH BALCONY |
| ■ 5. 2-BEDROOM FAMILY SUITE B WITH BALCONY | |

TYPICAL BUILDING FLOOR LAYOUT

38th floor

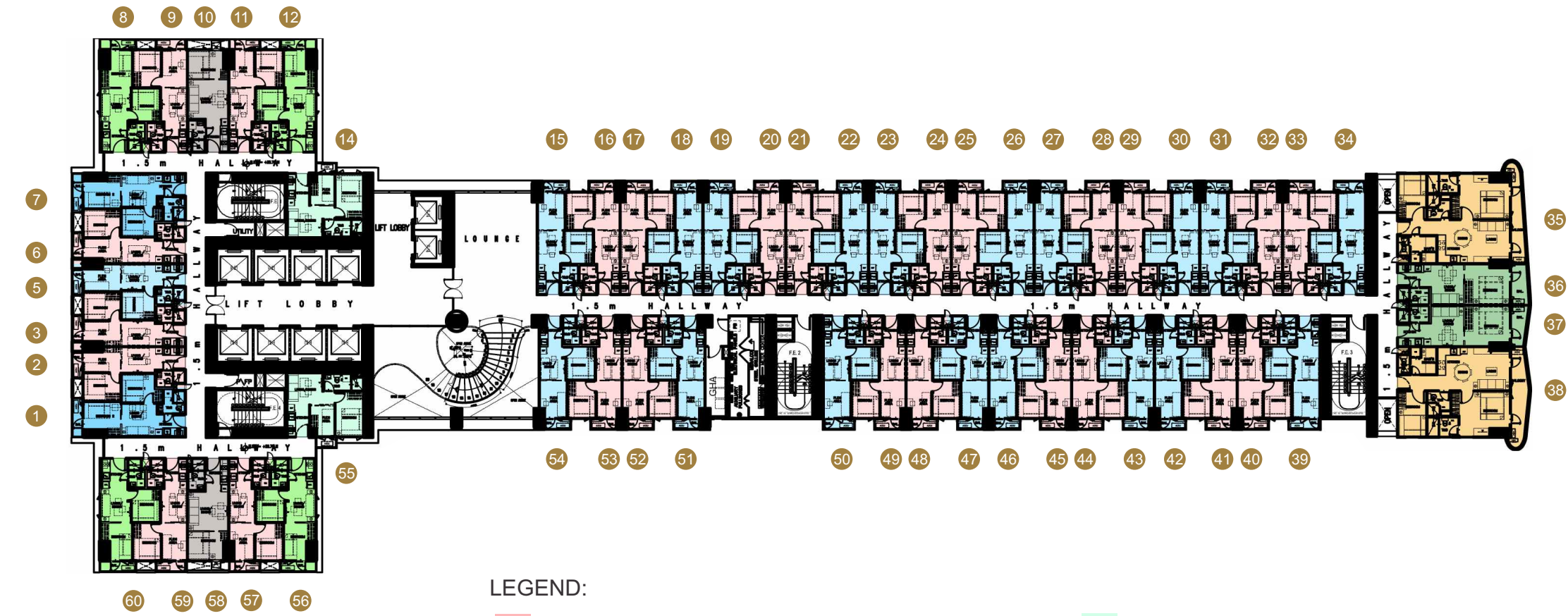


LEGEND:

- | | |
|---|---|
| 1. FAMILY SUITE A WITH BALCONY | 6. STUDIO UNIT |
| 2. FAMILY SUITE B WITH BALCONY | 7. 1-BEDROOM UNIT WITH DEN |
| 3. 2-BEDROOM FAMILY SUITE B WITH BALCONY | 8. 2-BEDROOM END UNIT WITH BALCONY |
| 4. 1-BEDROOM UNIT | 8. 1-BEDROOM UNIT WITH BALCONY |
| 5. 2-BEDROOM FAMILY SUITE B WITH BALCONY | |

TYPICAL BUILDING FLOOR LAYOUT

39th floor

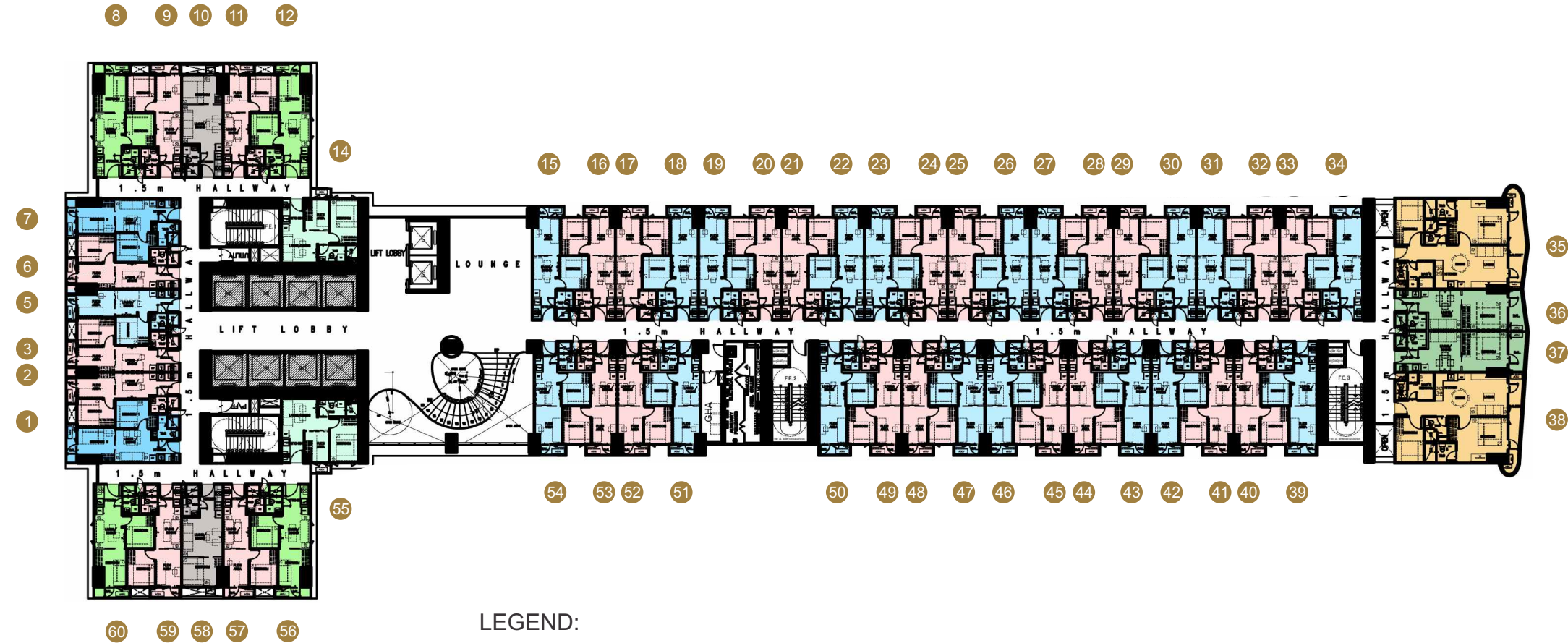


LEGEND:

- | | |
|---|---|
| 1. FAMILY SUITE A WITH BALCONY | 6. 1-BEDROOM UNIT WITH DEN |
| 2. FAMILY SUITE B WITH BALCONY | 7. 2-BEDROOM END UNIT WITH BALCONY |
| 3. 2-BEDROOM FAMILY SUITE B WITH BALCONY | 8. 1-BEDROOM UNIT WITH BALCONY |
| 4. 1-BEDROOM UNIT | |
| 5. 2-BEDROOM FAMILY SUITE B WITH BALCONY | |

TYPICAL BUILDING FLOOR LAYOUT

Lower Penthouse

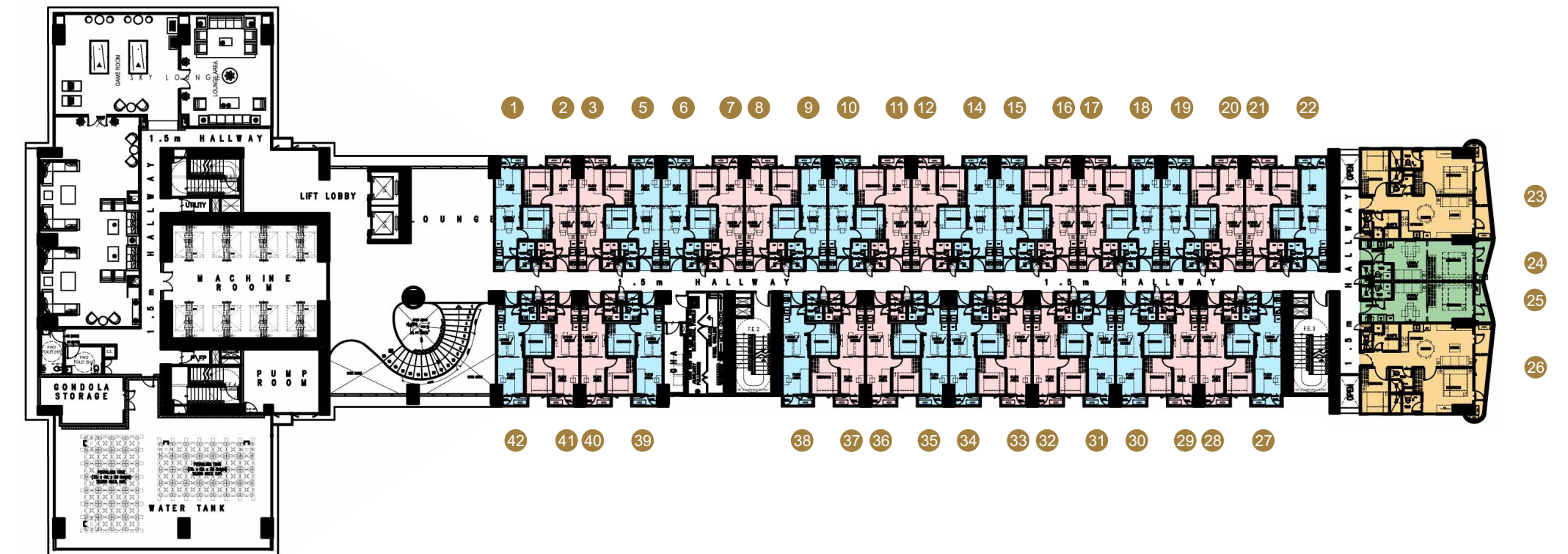


LEGEND:

- | | |
|--|--|
| 1. FAMILY SUITE A WITH BALCONY | 6. 1-BEDROOM UNIT WITH DEN |
| 2. FAMILY SUITE B WITH BALCONY | 7. 2-BEDROOM END UNIT WITH BALCONY |
| 3. 2-BEDROOM FAMILY SUITE B WITH BALCONY | 8. 1-BEDROOM UNIT WITH BALCONY |
| 4. 1-BEDROOM UNIT | |
| 5. 2-BEDROOM FAMILY SUITE B WITH BALCONY | |

TYPICAL BUILDING FLOOR LAYOUT

Upper Penthouse



LEGEND:

- | |
|--|
| 1. FAMILY SUITE A WITH BALCONY |
| 2. FAMILY SUITE B WITH BALCONY |
| 3. 2-BEDROOM END UNIT WITH BALCONY |
| 4. 1-BEDROOM UNIT WITH BALCONY |

UNIT DELIVERABLES

KITCHEN

- Painted walls & ceiling
- Floor Tiles
- Kitchen Sink
- Kitchen countertop with under counter & overhead cabinet
- Cooktop & rangehood

TOILET & BATH

- Combination of wall tiles and painted walls
- Painted ceiling
- Floor tiles
- Water closet, lavatory, shower set

LIVING/DINING/BEDROOM

- Painted walls & ceiling
- Floor Tiles

BALCONY

- Floor tiles
- Powder coated railings



Under SMDC Premier, urban living is taken to a new level of elegance built on the success and reliability of the SMDC brand.

SM Development Corporation (SMDC) is a leading developer of world-class residences in the Philippines.

It commits itself to provide access to luxurious urban living through vertical villages perfectly integrated with a commercial retail environment, giving residents access to a truly cosmopolitan lifestyle. SMDC properties are strategically situated in key areas across Metro Manila.